




GUSTA GARDEN
Taste your garden

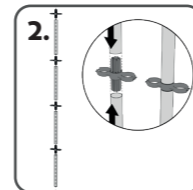
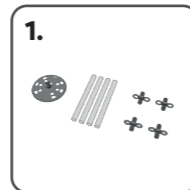
Gusta Garden GmbH
Eschenweg 16
9551 Bodensdorf
AUSTRIA
office@gustagarden.com
www.gustagarden.com

 designed in Austria

AUFBAU SET-UP

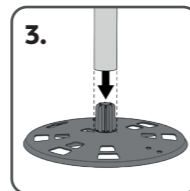
Packungsinhalt:
4 Alu-Rohre,
4 Verbinder &
1 Standfuß

Package contents:
4 aluminum-tubes,
4 connectors & 1 base



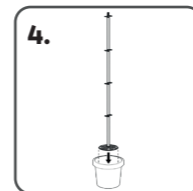
Stecke die Alu-Rohre
mit den Verbindern
zusammen.

Assemble all tubes with
the connectors.



Verbinde die Alu-Rohre
mit dem Standfuß.

Insert the climbing-
support into the base.



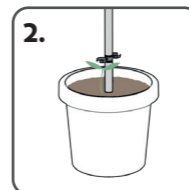
Stelle TOMATO BUDDY
in einen beliebigen
Pflanztopf.

Place TOMATO BUDDY
in a common planter.

ANBAU GROWING

Befülle den Topf mit
Tomatenerde.

Fill your planter
with tomato soil.

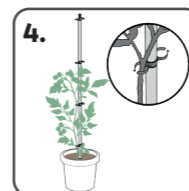
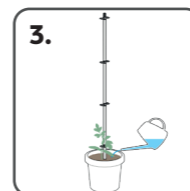


Setze eine Tomaten-
pflanze mittig neben
die Rankhilfe.

Plant a tomato seedling
right next to the
climbing support.

Gieße deine Pflanze
regelmäßig.

Water your
plant regularly.



Hänge von Zeit zu Zeit
den Haupttrieb in die
Rankhilfe ein.

During growth hang
the main shoot into the
integrated fastening clips.



TOMATO BUDDY



ANLEITUNG
MEHR INFORMATIONEN
www.gustagarden.com/howto

MANUAL
MORE INFORMATION
www.gustagarden.com/en/howto



GUSTA GARDEN
Taste your garden



CHARLY CHILI

Der Chilipotf mit Wassertank & Ranksystem
The chili pot with water tank & climbing system



PAUL POTATO

Der weltweit erste professionelle Kartoffelturm
The world's first professional potato tower



TOM TOMATO

Der Tomatentopf mit Wassertank & Rankhilfe
The tomato pot with water tank & climbing support



SISSI STRAWBERRY

Der weltweit erste Erdbeerbaum
The world's first strawberry tree